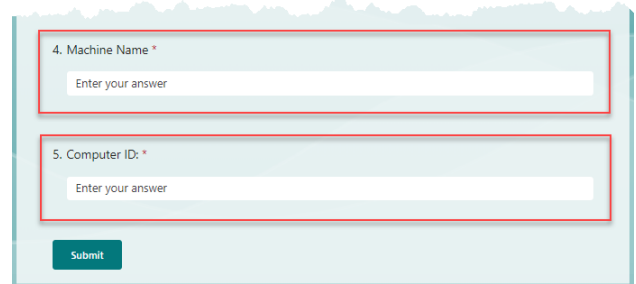
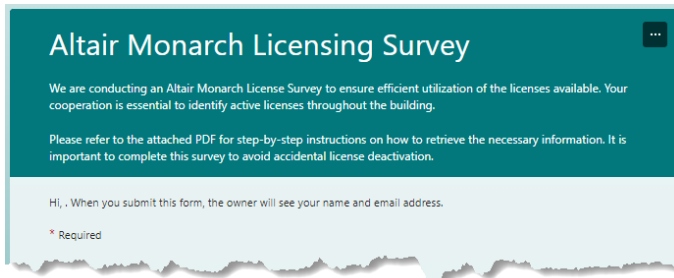


Altair Monarch Licensing Identification

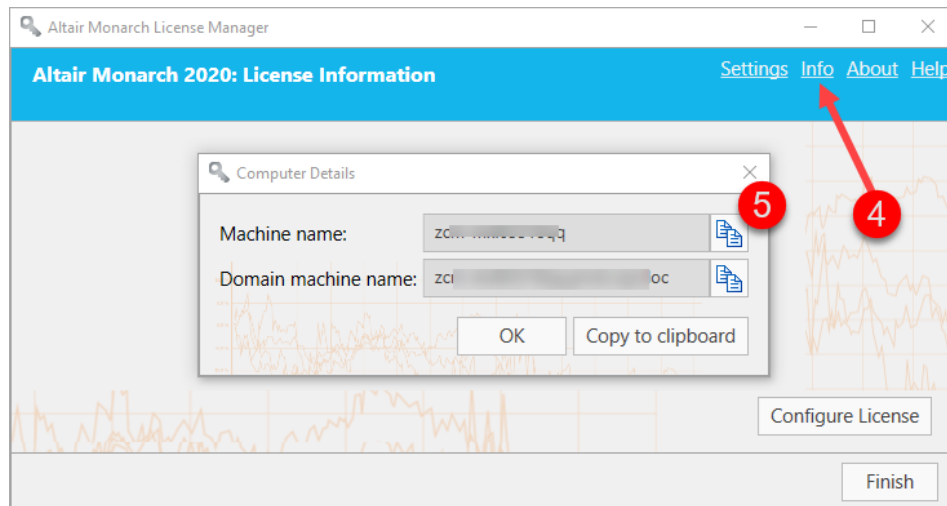
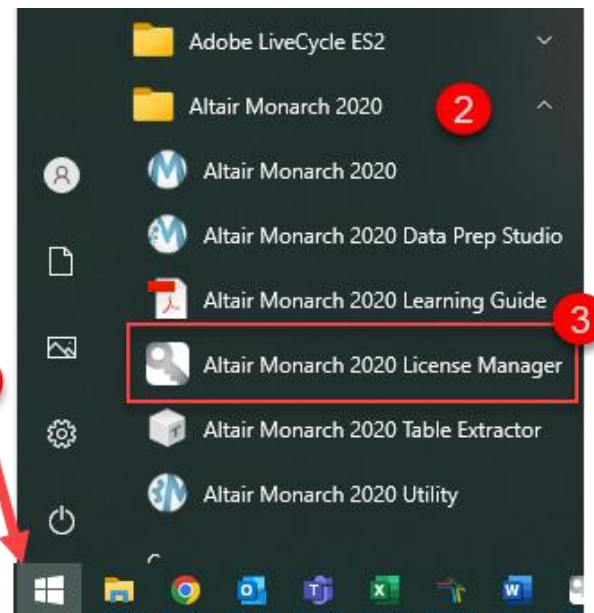
We are conducting an Altair Monarch License Survey to ensure efficient utilization of the licenses available. Your cooperation is essential to identify active licenses throughout the building.



Below are the instructions on how to retrieve the necessary information. It is important to complete this survey to avoid accidental license deactivation.

Locating the MACHINE NAME:

1. Click the Windows icon, in the bottom left corner of your screen.
2. Select the Altair Monarch 2020 folder. Note: Older versions may have the Datawatch Monarch 15 folder instead.
3. Select License Manager.
The License Manager screen will display.
4. Click the Info link in the upper right corner of the screen.
5. Copy the Machine Name and paste it in the proper field on the Altair Monarch License survey.
6. Click the X in the upper right corner to dismiss the window.

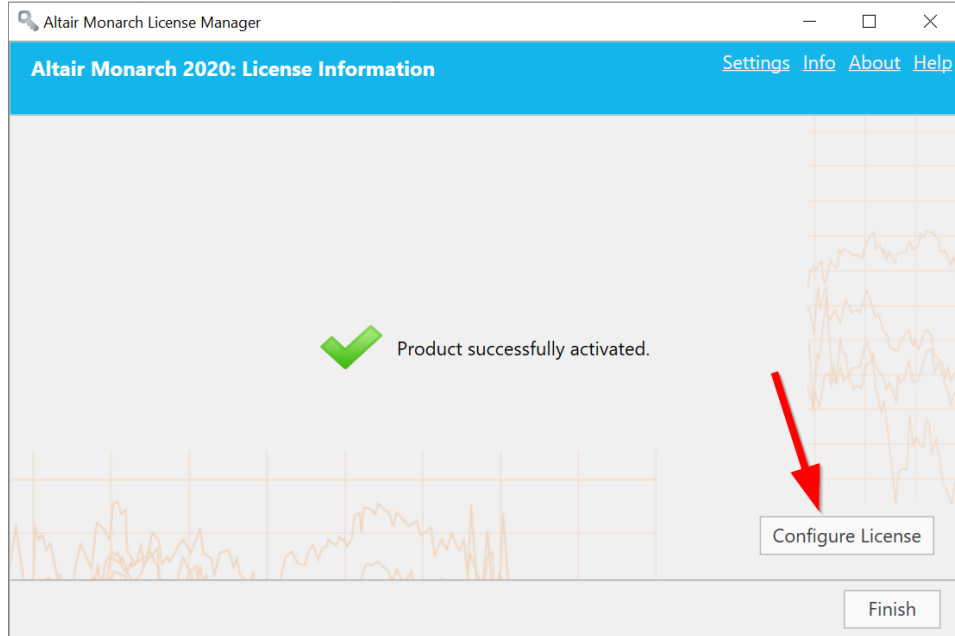


Altair Monarch Licensing Identification

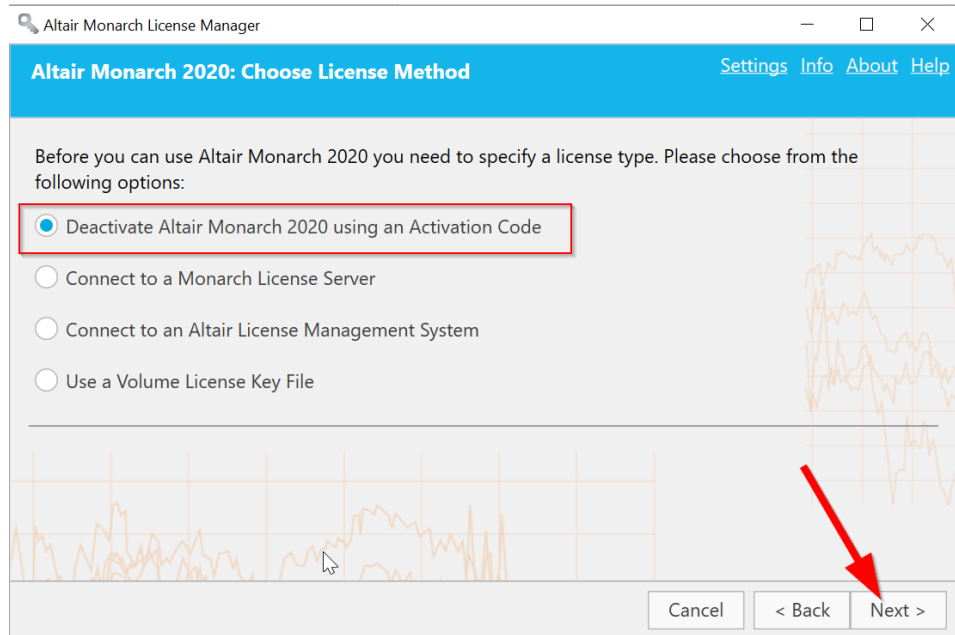
Locating the **COMPUTER ID**:

From the License Manager screen:

1. Click the Configure License button in the lower right portion of the window.

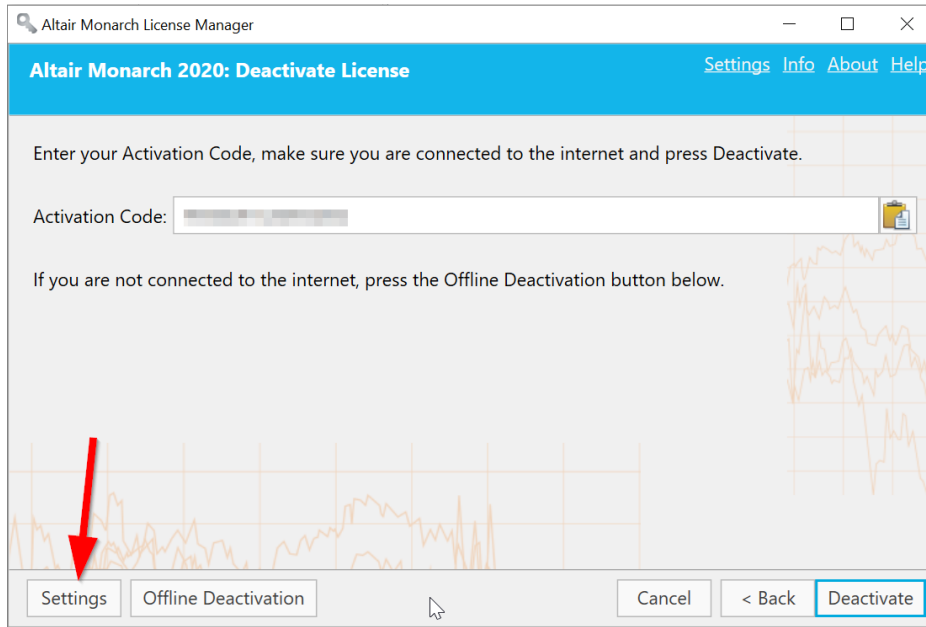


2. On the next screen, click Next to accept the default license method (Deactivate Altair Monarch 2020 using an Activation Code).



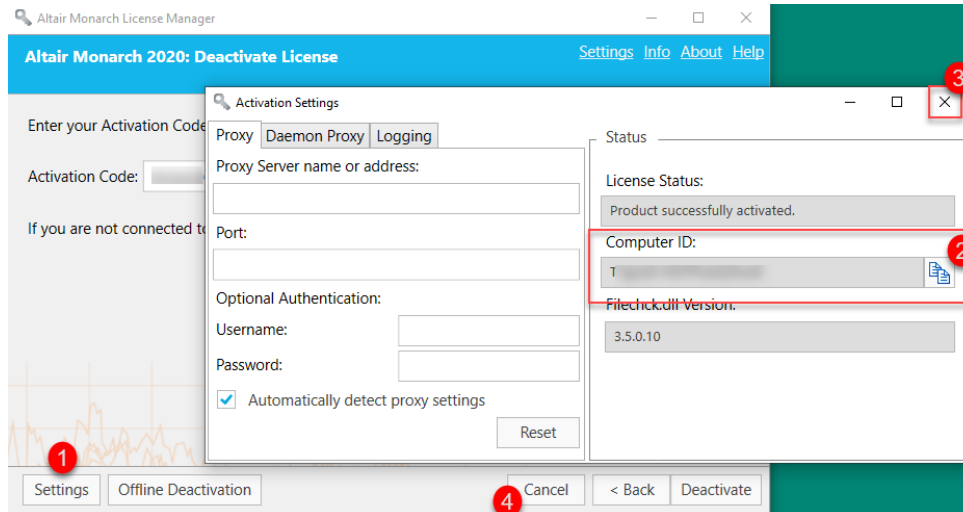
Altair Monarch Licensing Identification

- Click the Settings button in the lower left corner of the window.



The Activation Settings window will display.

- On the right-hand side of the window, copy the Computer ID and paste it in the proper field on the Altair Monarch License survey.



- Click the X in the upper right corner to dismiss the window.
- Click Cancel to close the window.